

# DATA LOGGING SOLUTIONS DAIRY PROCESSOR



PROCESSING



PASTEURIZATION



STORAGE



SHIPPING

MadgeTech provides data logging solutions to assist small milk producers and other dairy applications, in monitoring environmental parameters throughout processing and distribution. Temperature and humidity sensitive products must be kept within strict thresholds in order to ensure freshness and maintain quality. Whether shipping milk from the farm to the distributor, making cheese, producing ice cream or selling dairy products, MadgeTech has a solution for your cold chain needs.

# THE MADGETECH ADVANTAGE

Ensure safety, quality and efficiency by measuring and recording crucial data for inconsistencies that directly impact the success of a business. Our customizable data logging solutions provide real-time monitoring for applications where the slightest change in environment could be destructive. Coupled with the accuracy and reliability of our products, we also offer free software and cloud services, making compliance and validation reporting a breeze.

## Why Choose MadgeTech?

At MadgeTech we take pride in maintaining meaningful relationships with our customers, going above and beyond to turn their everyday problems into new data logging solutions. To ensure the instrument's accuracy, MadgeTech offers in-house standard and customized calibration services, including ISO/IEC 17025 accredited calibrations for certain products.

### Benefits:

- ▲ Calibration
- ▲ ISO/IEC 17025 Accreditation
- ▲ IQ/OQ/PQ On-Site Services
- ▲ Free Technical Support
- ▲ Free Software
- ▲ Cloud Services
- ▲ 21 CFR Part 11 Compliance

MadgeTech data loggers are designed, manufactured and serviced in the USA and distributed worldwide. **Pacific Sensor Technologies Pty Ltd.** is the Australian Distributor for MadgeTech Data Loggers.



**HEADQUARTERS**  
Warner, New Hampshire

# TEMPERATURE DATA LOGGERS

## Milk Pasteurization

The **MicroTemp** is a miniature, submersible temperature data logger. At only 2.6 in (66 mm) tall and 0.7 in (18 mm) in diameter, this recorder can easily fit into most beverage bottles and monitor and record temperature from -40 °F to +176 °F (-40 °C to +80 °C) through the entire pasteurization cycle.



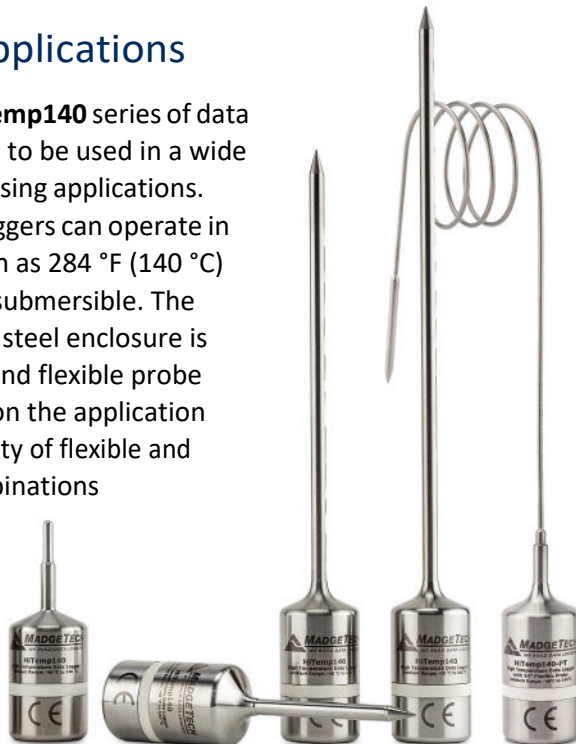
## Cleaning Verification and Validation

The MadgeTech **HiTemp140-M12** data logger is designed to be used in dairy processing plants where cleaning-in-place applications need to be verified and validated. The HiTemp140-M12 can connect directly to the processing equipment to time-stamp data, providing a record of cleaning cycle temperature and duration.



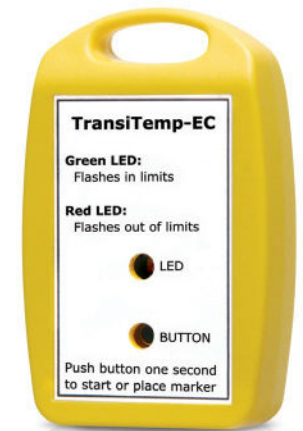
## Processing Applications

The MadgeTech **HiTemp140** series of data loggers are designed to be used in a wide range of food processing applications. The versatile data loggers can operate in temperatures as high as 284 °F (140 °C) and are completely submersible. The food-grade stainless steel enclosure is available with rigid and flexible probe models, depending on the application requirements. A variety of flexible and ambient probe combinations are available.



## Shipping & Delivery Temperature Monitoring

The **TransiTemp-EC-Multi** is a low cost, splash proof temperature data logger that is ideal for shipping applications between the range of -4 °F to +158 °F (-20 °C to +70 °C). It is designed for high volume, low cost in-transit recording. It has a custom molded case with a handle for convenient attachment and comes in single and multi-use versions. The features of this device make it ideal for monitoring the temperature of refrigerated goods during shipping.



# WIRELESS STORAGE DATA LOGGERS

For monitoring of temperature and humidity in warehouses, coolers and freezers, MadgeTech offers wireless data loggers for real time monitoring. Data is also sent wirelessly back to a central PC through the RFC1000 wireless network.

This series also includes an audible alarm to alert users in close proximity. If the temperature or humidity exceeds the safe range, the audible alarm alerts users to take immediate action. Email and SMS alerts can also be configured. Wireless data loggers can also be connected to the MadgeTech Cloud, making real time data available from any internet enabled device.

The **RFTCTemp2000A** is a wireless thermocouple based temperature data logger. This device measures both ambient and thermocouple temperature. Depending on the probe, the device can record temperatures from -454 °F to +3308 °F (-270 °C to +1820 °C). The convenient LCD provides instant viewing of the current ambient and thermocouple readings, as well as access to minimum, maximum, and average statistics. Data can also be sent wirelessly back to a central PC.

## Features

- LCD Screen
- Audible and LED Alarm Indicators
- Battery Life Indicator
- MadgeTech Cloud Compatible

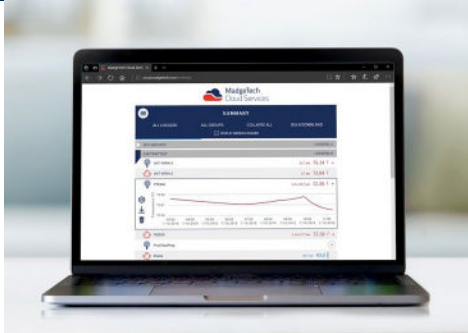


**RFRHTemp2000A**  
Wireless Temperature and Humidity Data Logger with LCD display on wall mount.



**RFTCTemp2000A**  
Wireless Thermocouple based Temperature Data Logger with LCD display on table mount.

# ACCESS DATA INSTANTLY FROM ANYWHERE IN THE WORLD



## MadgeTech Cloud Services

The **MadgeTech Cloud** is compatible with all MadgeTech wireless data loggers, providing users with instant access to real-time data from any location. With the MadgeTech Cloud, data loggers can securely transmit data to be viewed on any Internet enabled device such as a computer, tablet or smartphone.

### Scalable Solution

The MadgeTech Cloud is designed to support organizations of any size. From a single data logger to a network consisting of hundreds of loggers, the MadgeTech Cloud provides facilities with on-demand data supervision, attainable results, and flexibility like never before. The MadgeTech Cloud gives users the power to have control of all their critical data right in the palm of their hand.

### Cloud Capabilities

All wireless MadgeTech data loggers can transmit data to the MadgeTech Cloud to be saved, viewed and controlled. The data is available for viewing from any Internet enabled device anywhere in the world. Equipped with many features, the MadgeTech Cloud is flexible enough to adapt to any data logging needs.

### New Logger Groups

Assembling data loggers is easier than ever thanks to the MadgeTech Cloud's Logger Groups. Users have the ability to organize data loggers into groups and subgroups, making all data easily accessible from one central location.

### Email & Text Message Alerts

The MadgeTech Cloud allows users to configure alarms to alert for no readings, channel thresholds or battery level. When an alarm is triggered, text message or email notifications are instantly sent, giving users the ability to view the data and assess the situation immediately.



Quick and  
Easy Setup



View Data  
From Anywhere

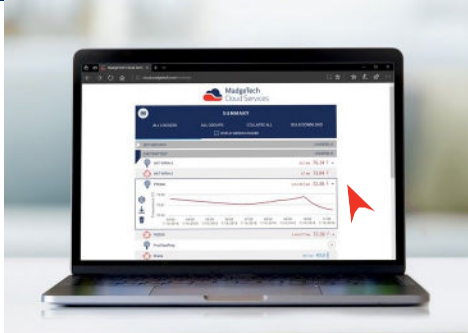


Access Data  
Instantly



Email and Text  
Notifications

# TRANSMIT DATA TO THE MADGETECH CLOUD



## MadgeTech Cloud Services



Taking cloud data logging to a whole new level! The **RFC1000 Cloud Relay** is a data logging hub that connects to the Internet via Ethernet and transmits data directly to the MadgeTech Cloud. This allows users to remotely monitor and manage groups of data loggers throughout a large facility or multiple locations without the need of a central PC.

The RFC1000 Cloud Relay has the ability to transmit data for up to 64 data loggers with no limit on the number of cloud relays that can be connected to a cloud account. This provides users with the ability to obtain information from a single data logger to many data loggers in multiple locations.



Relay Data  
Directly to the  
MadgeTech Cloud



Long Distance  
Wireless  
Transmission



LED Indicators

# MADGETECH 4 SOFTWARE

The simple, easy-to-use, Windows-based software enables the user to effortlessly collect, display and analyze data. A variety of powerful tools can be used to examine, export, and print professional quality reports with just a click of the mouse. This software can be downloaded for free from the MadgeTech website.

## MadgeTech 4 Software Customizable Features and Options

**MadgeTech 4 Software** can communicate with multiple loggers through multiple interface cables. Capable of simultaneous start, stop and download of over 100 devices, this software serves as your virtual command center for large scale facilities and small. Display your data in graphs, with tabbed views and multi-monitor support. Utilize the infinite graphing flexibility by combining channels and datasets as desired. All graphing makes use of accelerated graphics hardware for real-time updating and high performance visuals.

MadgeTech 4 Software is designed with a built-in database for automatic storage of downloaded data. The look and feel is organized much like standard email programs to aid in user friendliness and ease of use. MadgeTech 4 Software also offers extensive alarming options across multiple devices, wireless and non-wireless. Alarm output options include email, on-screen, text message and run-a-program alerts.

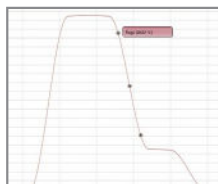
MadgeTech 4 Software has a powerful and comprehensive statistics system that allows the user to customize and view statistics as desired. Another feature is customizable engineering units. This enables users to support and program devices with many different unit types as well as the ability to display them as an alternate unit if desired.

## Software Features

- Multiple Graph Overlay
- Statistics
- Digital Calibration
- Zoom In / Zoom Out
- Cooling Flags
- Lethality Equations (F0, PU)
- Mean Kinetic Temperature
- Full Time Zone Support
- Data Annotation
- User Friendly File Management
- Min. / Max. / Average Lines
- Timeslice
- Data Table View
- Automatic Report Generation
- Summary View
- Workflows / Automation



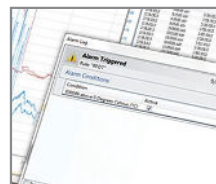
Cooling Flags



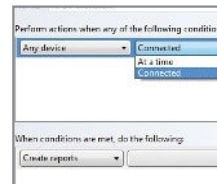
Graph View

Time	Time Zone	Data
1:13:57 PM	-04:00	-00.0000
1:14:57 PM	-04:00	+00.0100
1:15:57 PM	-04:00	+00.0200
1:16:57 PM	-04:00	+00.0300
1:17:57 PM	-04:00	+00.0400
1:18:57 PM	-04:00	+00.0500
1:19:57 PM	-04:00	+00.0600
1:20:57 PM	-04:00	+00.0700
1:21:57 PM	-04:00	+00.0800
1:22:57 PM	-04:00	+00.0900
1:23:57 PM	-04:00	+00.1000
1:24:57 PM	-04:00	+00.1100
1:25:57 PM	-04:00	+00.1200

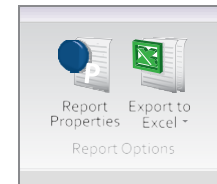
Tabular Data View



Alarm Notifications



Automation



Export to Excel